

COLLABORATIVE ASSIGNMENTS

1 WHAT IS A COLLABORATIVE ASSIGNMENT?

A collaborative assignment is a learning activity in which students work together to solve problems and listen to each others' insights while doing so. Some examples are study groups within a course, team-based assignments, and group research ([AAC&U, 2023](#)).



2 HIGH IMPACT ELEMENTS OF COLLABORATIVE ASSIGNMENTS

- Completion of a challenging, relevant, and complex task
- Representation of diverse perspectives in groups
- Individual accountability ([Laal et al., 2013](#), [Michigan CRLT, 2021](#))
- Student autonomy ([Scager et al., 2016](#))



Collaborative
Signature
Assignments may
have these high
impact elements

COLLABORATIVE ASSIGNMENTS

3

STRATEGIES FOR EFFECTIVE COLLABORATIVE LEARNING

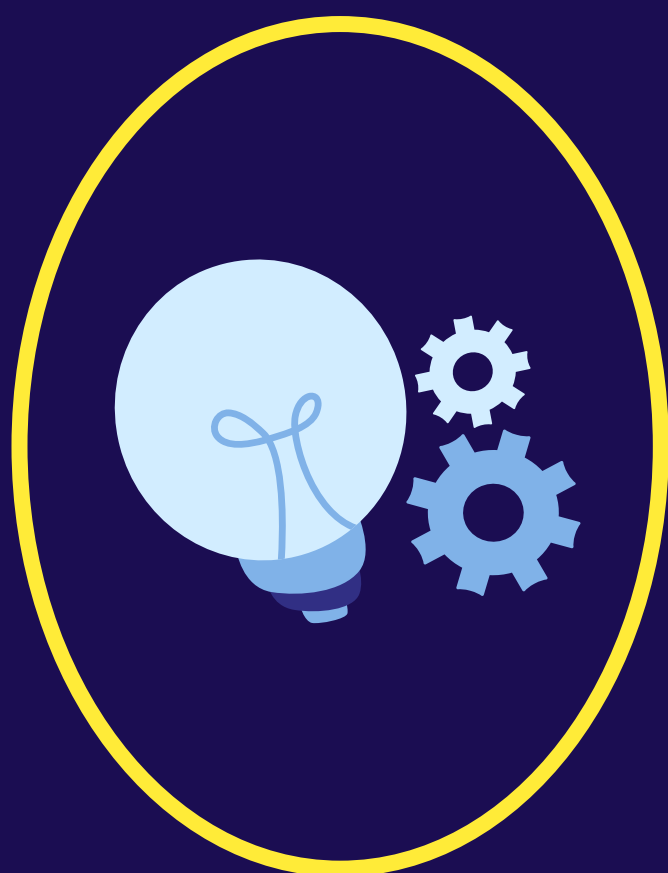
- Create an environment in which students trust and respect each other. Try some ice breakers on the first day!
- Communicate the purpose of the activity and establish group expectations.
- Partner with students. This might look like co-creating expectations or rubrics, or asking students to choose their own roles.
(Columbia CTL, 2023)



4

DESIGN COMPONENTS OF COLLABORATIVE ASSIGNMENTS TO CONSIDER

- Learning goals or objectives
- Interactions between group members
- Task characteristics
- Structure of group activity
- Guidance provided by instructor
- Space and time available for group work
(de Hei et al., 2016)



Interested in talking through some collaborative assignment design? Contact Audrey Tocco for a consultation.